

316L

STAINLESS STEEL

316L is an austenitic low-carbon stainless steel known for excellent corrosion resistance and ductility.

It is a versatile material used in a variety of applications and industries including dental/medical, consumer electronics, aerospace, marine, and designer textiles.

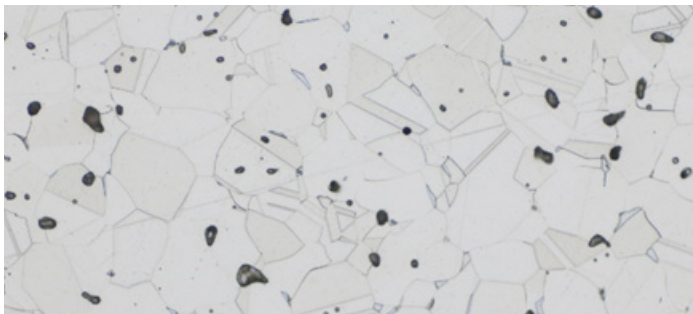
Composition	Weight%
Iron	Balance
Chromium	17
Nickel	11
Molybdenum	2.2
Copper	0.015

Features & Benefits
Excellent corrosion resistance
Surface treatable
Ductile



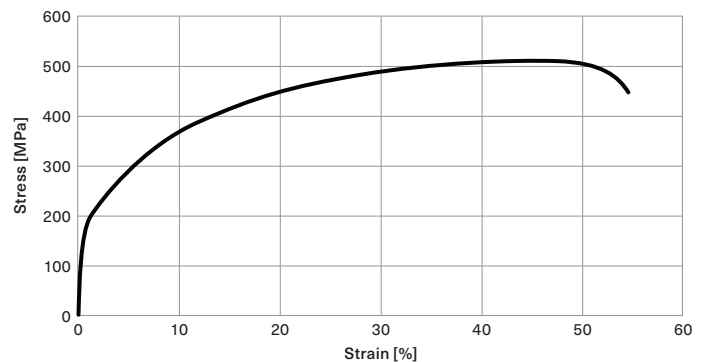
*Related standards and denominations: ISO22068 (2014) ; MPIF #35 (2018) ; 1.4404; AISI 316L; UNS S31603

Physical Properties	As Sintered
Ultimate tensile strength [MPa]	520
Yield strength [MPa]	180
Elongation [%]	50
Hardness [HRB]	55
Relative density [%]	97



Predominately austenitic structures with rounded pores and minor fraction of delta-ferrite

TENSILE PROPERTIES



These representative data were tested, measured, or calculated using standard methods and are subject to change without notice. Markforged makes no warranties of any kind, express or implied, including, but not limited to, the warranties of merchantability, fitness for a particular use, or warranty against patent infringement; and assumes no liability in connection with the use of this information. The data listed here should not be used to establish design, quality control, or specification limits, and are not intended to substitute for your own testing to determine suitability for your particular application. Nothing in this sheet is to be construed as a license to operate under or a recommendation to infringe upon any intellectual property right.