

4140

LOW ALLOY STEEL

4140 is a low-alloyed steel known for its high strength, hardenability, and toughness. It is commonly used to produce gears, pulleys, and fasteners in the automotive and machinery industries, where precise and strong components are required.

Additionally, it can be easily machined and welded, and can be heat-treated to enhance its mechanical properties.



Composition	Weight%
Iron	Balance
Chromium	1.0
Molybdenum	0.2
Manganese	0.7
Silicon	0.3
Carbon	0.4

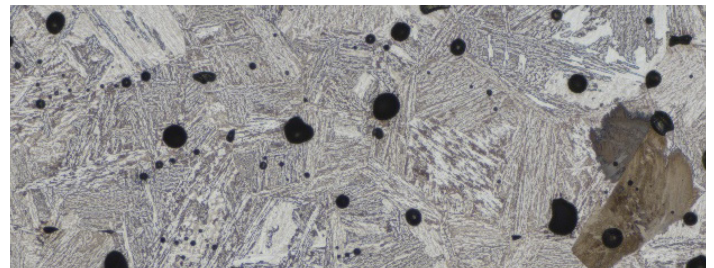
Features & Benefits

- Hardenable
- High specific strength
- Good impact and abrasion resistance

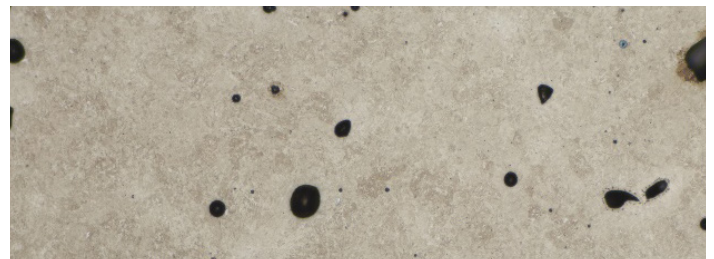
*Related standards and denominations: ISO22068 (2014) ; MPIF #35 (2018) ; 1.4404; AISI 316L; UNS S31603

Physical Properties	As Sintered	As Q+T*
Ultimate tensile strength [MPa]	880	1600
Yield strength [MPa]	640	1400
Elongation [%]	6	3
Hardness [HRC]	95 (HRB)	47 (HRC)
Relative density [%]	96	96

*Q=Quench, T=Temper



As sintered



Q+T

These representative data were tested, measured, or calculated using standard methods and are subject to change without notice. Markforged makes no warranties of any kind, express or implied, including, but not limited to, the warranties of merchantability, fitness for a particular use, or warranty against patent infringement; and assumes no liability in connection with the use of this information. The data listed here should not be used to establish design, quality control, or specification limits, and are not intended to substitute for your own testing to determine suitability for your particular application. Nothing in this sheet is to be construed as a license to operate under or a recommendation to infringe upon any intellectual property right.